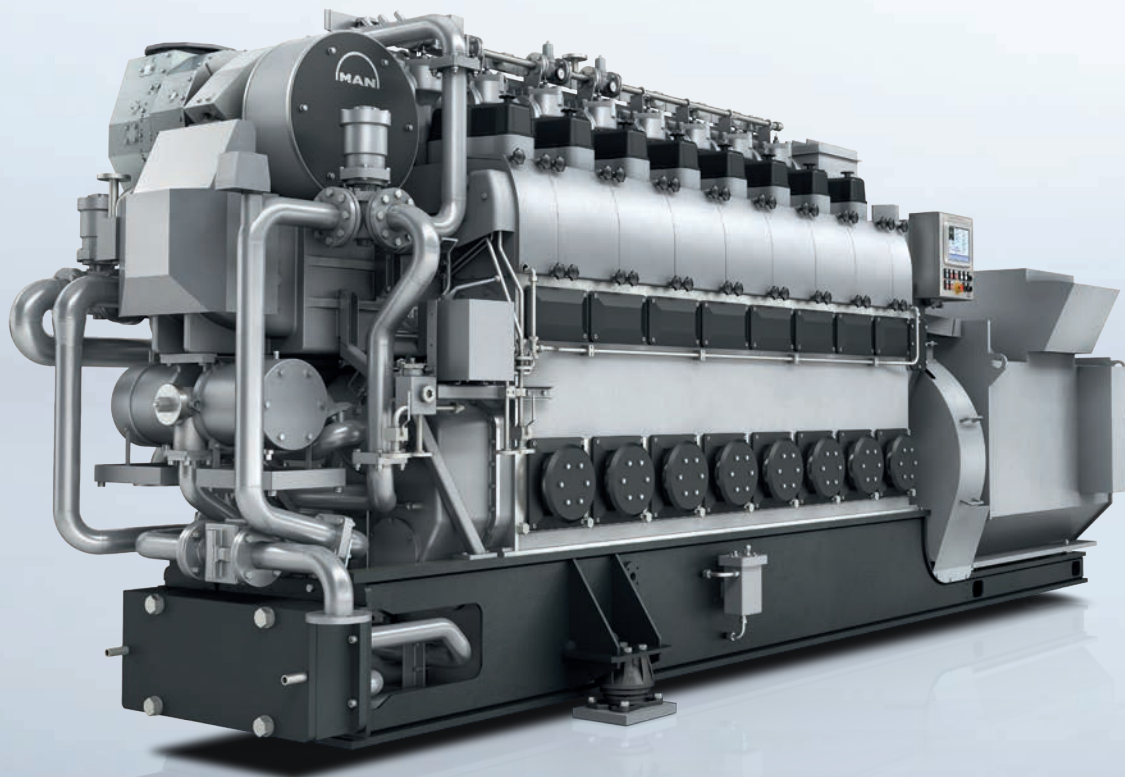


**FOUR  
STROKE  
MARINE  
ENGINES**

# MAN L23/30DF

**GENSET**



The dual fuel MAN 23/30DF is based on the popular and robust MAN 23/30 diesel GenSet, and is available for new buildings as well as an economical retrofit solution. It is ideal for many applications requiring economical power, reliability and full environmental compliance.

## **Benefits at a glance**

- IMO Tier III-compliant in gas mode
- High efficiency in Gas and Diesel mode
- Easy operation, easy maintenance and proven reliability
- Long time between overhauls with low life cycle costs

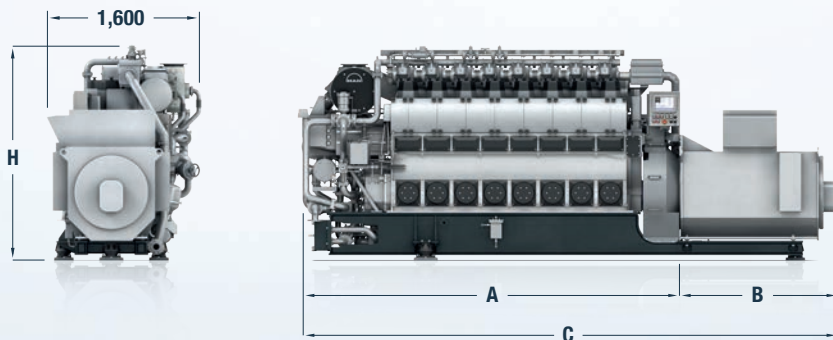
Engineering the Future – since 1758.

**MAN Diesel & Turbo**



# MAN L23/30DF

GENSET



## Dimensions

Cyl. No.	5	6	6	7	7	8	8	
	720/750	720/750	900	720/750	900	720/750	900	rpm
A	3,469	3,838	3,838	4,208	4,275	4,578	4,895	mm
B	2,202	2,250	2,250	2,302	2,302	2,352	2,352	mm
C	5,671	6,088	6,088	6,510	6,577	6,930	7,247	mm
H	2,685	2,685	2,685	2,685	2,685	2,685	2,685	mm
Dry mass	17.4	19.1	19.5	21.6	21.6	23.4	23.6	t

## Output

Speed	720	720	750	750	900	900	
Frequency	60	60	50	50	60	60	Hz
	Eng.	Gen.*	Eng.	Gen.*	Eng.	Gen.*	
MAN 5L23/30DF	625	590	625	590	-	-	kW
MAN 6L23/30DF	750	710	750	710	900	855	kW
MAN 7L23/30DF	875	830	875	830	1,050	995	kW
MAN 8L23/30DF	1,000	950	1,000	950	1,200	1,140	kW

\*Based on nominal generator efficiencies of 95%  
 Gas/ fuel ratio at load: 20-100% 99/1 (Tier III) | Gas methane number ≥ 28  
 Note: L23/30 DF Tier III is ready for delivery 4th quarter 2016  
 Last updated August 2016

## General

- Engine cycle: Four-Stroke
- No. of cylinders: 5, 6, 7, 8
- Bore: 225 mm – Stroke: 300 mm
- Swept volume per cyl: 11.9 dm<sup>3</sup>

## Cylinder output (MCR)

- At 720/750 rpm: 125 kW
- At 900 rpm: 150 kW
- Power-to-weight ratio: 19.8 – 27.2 kg/kW

## Compliance with emission regulations

- IMO Tier II
- IMO Tier III (Gas mode)

## Main features

- Turbocharging system**  
High efficiency constant pressure MAN TCR series exhaust turbocharging system
- Engine automation and control**  
MAN in-house developed engine attached Safety and Control System **SaCoS<sub>One</sub>**
- Air management**  
Waste Gate controlled air-fuel ratio in gas mode with jet assist for improved load response and start up time

MCR = Maximum Continuous Rating

## Fuel system

Combined fuel injection system for main liquid fuel and pilot fuel injection based on the well proven and reliable conventional MAN 23/30H engine

## Gas system

Cylinder individual low pressure gas admission system

## Cooling system

2-string high and low temperature cooling water systems

## Starting system

Pressurized air starter (turbine type)

## Engine mounting

Resilient GenSet mounting on improved base frame “monocoque design” concept with reduced overall GenSet weight and stiff construction for reduced level of vibration and simple installation into the engine room

MAN Diesel & Turbo, 86224 Augsburg, Germany

Phone +49 821 322 0, Fax +49 821 322 3382

info@mandieselturbo.com, www.marine.man.eu